

T&I

Richard Wagner / Erik Carlson

A reduction of Tristan und Isolde for solo violin.

Each measure of the original is translated into one beat in the solo.

If Isolde sings in a measure, the violin plays an F on the corresponding beat.

If Tristan sings in a measure, the violin plays an A on the corresponding beat.

Play softly at a moderate tempo

I recommend turning the page between each scene so that the audience can follow along.

Act I Prelude

28

The image shows a musical staff with a treble clef and a common time signature 'c'. The staff is divided into three measures by vertical bar lines. The first measure is empty. The second measure contains a single note on the second line of the staff, which is an F. The third measure contains a single note on the second space of the staff, which is an A. The page number '28' is centered above the staff.

Act I Scene 1

Musical staff with treble clef, measures 1-5. Measure numbers 6 and 4 are indicated above the staff.

Musical staff with treble clef, measures 6-10. Measure numbers 2 and 3 are indicated above the staff.

Musical staff with treble clef, measures 11-15. Measure number 13 is indicated above the staff.

Act I Scene 2

5

5

4

4

2

3

3

3

12

Act I Scene 3

3 3 2 2

8 4

9 3

5 3

24 3 17

5

Act I Scene 4

13

3

3

2

2

2

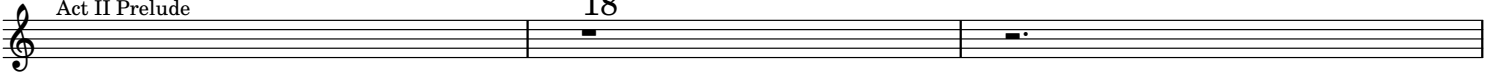
Act I Scene 5

8



Act II Prelude

18



Act II Scene 1 7

4



3

4

2

11



3

7

5



6

11

2



3

4

3

14



Act II Scene 2

3

2

4 4 4 2 20 4

11 5 9 5 11

3 5 2

5 12

3 3 4 5

3

3 4 2

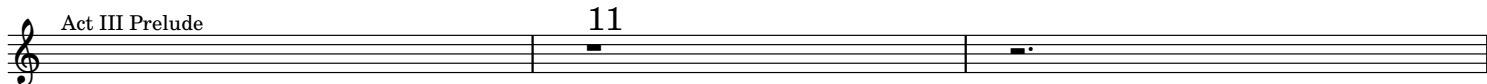
3 3 2

Act II Scene 3



Act III Prelude

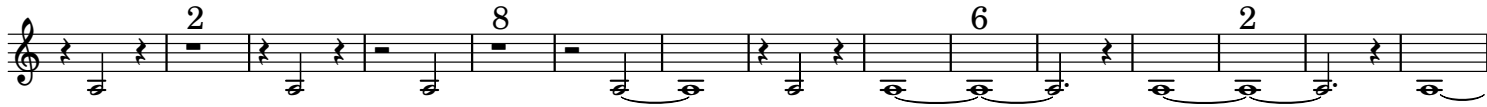
11



A musical staff with a treble clef on the left. The staff is divided into two measures by a vertical bar line. The first measure contains a single eighth note on the second line. The second measure contains a single eighth note on the second line with a dot above it, indicating a dotted eighth note.

26
Act III Scene 1

3



Act III Scene 2

9 3

This musical staff features a treble clef and a key signature of one flat. It begins with a whole rest for 9 measures, followed by a triplet of eighth notes (G4, A4, B4), a whole rest for 3 measures, another triplet of eighth notes (G4, A4, B4), and a final whole rest.

2 2

This musical staff features a treble clef and a key signature of one flat. It starts with a whole rest for 2 measures, followed by a quarter note (G4), a whole rest for 2 measures, a quarter note (A4), a whole rest for 2 measures, a quarter note (B4), and a final whole rest.

3 3 2

This musical staff features a treble clef and a key signature of one flat. It begins with a quarter note (G4), followed by a triplet of eighth notes (A4, B4, C5), a whole rest for 3 measures, a quarter note (B4), a triplet of eighth notes (A4, G4, F4), a whole rest for 3 measures, a quarter note (E4), and a final triplet of eighth notes (D4, C4, B3).

7

This musical staff features a treble clef and a key signature of one flat. It starts with a quarter note (G4), a whole rest for 7 measures, a quarter note (A4), a quarter note (B4), a whole rest for 7 measures, a quarter note (C5), a quarter note (B4), a whole rest for 7 measures, a quarter note (A4), a quarter note (G4), and a final whole rest.

Act III Scene 3

45

17

